
Right Weigh Clinic
601-936-2887

- *In-Depth Nutrition Classes*
- *Physician Office Visits*
- *FDA Approved Prescription Medication for Weight Loss*
- *Personal Consults*
- *Weekly Weigh-Ins & Blood Pressure Checks*
- *Body-Fat Analysis*
- *High Protein, Low Carb Snacks and Drinks*
- *EKG*
- *Myoden and Lipotropic Injections*



*We Sell Health Wise Protein Bars
and Drinks*

	Open
Monday	8:00-5:00
Tuesday	8:00-5:00
Wednesday	8:00-5:00
Thursdays	8:00-5:00
Friday	8:00-5:00
Saturday and after hours appts	available upon request



309 Airport Rd Suite B
Pearl, MS 39208
www.RightWeighClinic.com

601-936-2887
601-936-2897 fax



*Empowering you through
Education and Medical Support*



A Different Kind of
Medical Weight Loss Clinic
www.rightweighclinic.com

601-936-2887

The Right Weigh Clinic Program

- Obesity is a disease, not a personal failure.
- To obtain/maintain a healthy weight properly requires bariatric trained medical professionals.
- Right Weigh Clinic’s medical staff includes licensed, board certified physicians, licensed nurses, nutritionists and medical assistants all trained in weight control.
- Right Weigh Clinic believes that the life-long solution to weight control requires a medical plan based on each patients individual needs.
- Right Weigh Clinic’s program empowers our patients to obtain and maintain a healthy weight by using any or all of these tools:
 1. Prescription appetite suppressants
 2. Medical supplements
 3. Injections formulated to boost metabolism
 4. Weekly “weigh-ins” & counseling
 5. Nutrition education
 6. Recommended exercise programs



Step 1 Introductory Class

We will introduce you to our medical weight loss program, explain all of our services, and weigh you on our body fat analysis scales. Then provide you with materials to help you decide if you are ready to make the commitment to change your life.

Step 2 Physical Exam

You will be examined by one of our board certified physicians to determine if you’re healthy enough for prescription appetite suppressants and/or medical supplements.

The doctor will review your medical history and recommend a plan tailored to you specifically.

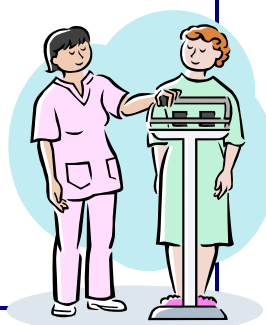
You will still need to consult your primary care doctor and any specialists for your non-weight-loss medical needs.

You will need to see the doctor every other month if you are using prescription appetite suppressants.

You will only need to see the doctor every 4 months if you are not using appetite suppressants.

Step 3 Weekly Weigh-Ins

At least once weekly you will come in and weigh, have your blood pressure taken and talk to a nurse about your progress. If an adjustment is needed, the physician will be consulted. You can get your injections at your weigh-in. No Appointment is necessary.



FEES

- Nutrition class.....\$25
- Physician Exam new/restart\$90
- Prescription Appetite Supp\$25
- EKG..... \$50
- Myoden Injection.....\$16
- Lipoplex Injection.....\$16
- Glucose test.....\$15
- Other medical supplements prices vary

Program Fees:

For your convenience we have a monthly program fee based on your individual program.

FAQs

- **Why should I enter the Right Weigh Clinic Program?** At our clinic we not only offer the traditional medical weight loss services but we have devoted 1000 sq ft to education. Our teachers help you to understand metabolism and replace old eating habits with healthy ones.
- **If I am on prescription medications, can I still enter the program?** Most patients who are on prescription medication can participate in the program.
- **What types of payment does the clinic accept?** Cash, checks, VISA, MC, American Express are all accepted. We provide a super bill for those filing on insurance.